



# CTP Engine Bearings

## CTP Engine Bearings

CTP Copper/Lead bearings are made of a sintered trimetal with a base alloy copper, lead and tin with a nickel dam and Babbitt top layer. The F780 alloy has a higher load carrying capacity than aluminum or other copper/lead alloy. As a result of this advance technology material, F780 will provide longer life in normal operation and significantly improved fatigue resistance under extreme operating conditions.

We also have available engine bearings made of aluminum, alloy, and other materials.

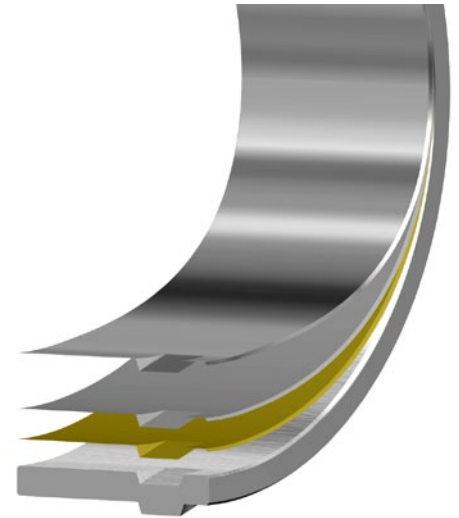
Part No. Main Bearing	Size (In)	Engine Model	Part No. Con. Rod Bearing
5I7588	Standard	3066	5I7637
5I7784	0.01	3066	5I7794
5I7785	0.02	3066	5I7795
5I7786	0.03	3066	5I7796
4W8093	Standard	3204	8N6308
8N8976	0.01	3204	1N3821
8N8972	0.02	3204	1N3822
8N8972-030*	0.03	3204	1N3822-030*
8N8972-040*	0.04	3204	1N3822-040*
8N8974	0.05	3204	1W3906
4W8092	Standard	3204	8N6308
8N9020	0.05	3204	1W3906
8N9022	0.01	3204	1N3821

## High Performance Copper/Lead Bearings

\* Other part no. not included in the list are available. Please contact your sales representative if you have any questions. Part Numbers are used for reference purposes only

## CTP Engine Bearings

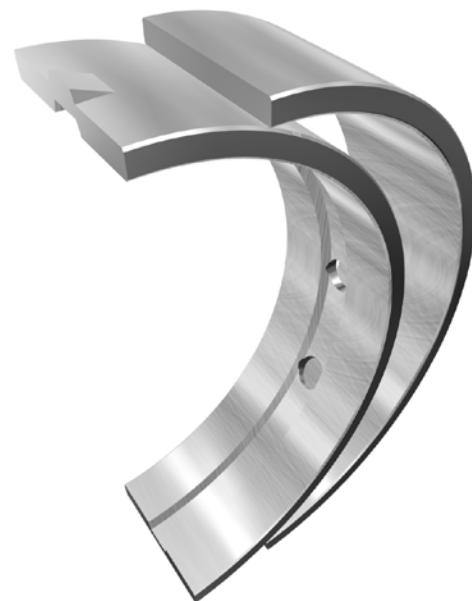
Part No. Main Bearing	Size (In)	Engine Model	Part No. Con. Rod Bearing
8N9023	0.02	3204	1N3822
8N9023-030	0.03	3204	1N3822-030*
8N9023-040	0.04	3204	1N3822-040*
8N8973	Standard	3204	8N6308
8N8971	0.02	3204	1N3822
8N8975	0.05	3204	1W3906
1W0312	Standard	3204	8N6308
1W1661	0.01	3204	1N3821
1W1662	0.02	3204	1N3822
1W1663	0.05	3204	1W3905
3285572	Standard	3306	8N1721
4W5738	Standard	3306	8N8220
8N8225	0.01	3306	8N8221
8N8226	0.02	3306	8N8222
8N8227	0.03	3306	8N8223
8N8227-040*	0.04	3306	8N8223-040*
8N8227-050*	0.05	3306	8N8223-050*
8N8227-060*	0.06	3306	8N8223-060*
8N8228	Standard	3306	8N8220
8N8229	0.01	3306	8N8221
1011530	Standard	3114, 3116, 3126	2246638
1450163	0.01	3114, 3116, 3127	7C6976
1450165	0.02	3114, 3116, 3128	7C6977
7C6973	0.03	3114, 3116, 3129	N/A
1077708	Standard	3114, 3116, 3130	2246638
1450162	0.01	3114, 3116, 3131	7C6976
1450164	0.02	3114, 3116, 3132	7C6977
7C6963	0.03	3114, 3116, 3133	N/A
4W8092	Standard	3145, 3150, 3160, 3208	9N5923
8N9022	0.01	3145, 3150, 3160, 3208	9N5924
8N9023	0.02	3145, 3150, 3160, 3208	9N5925
8N9023-030	0.03	3145, 3150, 3160, 3208	9N5925-030*
8N9023-040	0.04	3145, 3150, 3160, 3208	9N5925-040*
8N9020	0.05	3145, 3150, 3160, 3208	9N5926
4W8093	Standard	3208 Late	7E7894



\* Other part no. not included in the list are available. Please contact your sales representative if you have any questions.  
Part Numbers are used for reference purposes only

## CTP Engine Bearings

Part No. Main Bearing	Size (In)	Engine Model	Part No. Con. Rod Bearing
8N8972	0.02	3208 Late	9N5921
8N8972-030*	0.03	3208 Late	9N5921-030*
8N8972-040*	0.04	3208 Late	9N5921-040*
8N8974	0.05	3208 Late	9N5922
8N8976	0.01	3208 Late	9N5920
4W8092	Standard	3208 Late	7E7894
8N9022	0.01	3208 Late	9N5920
8N9023	0.02	3208 Late	9N5921
8N9023-030*	0.03	3208 Late	9N5921-030*
8N9023-040*	0.04	3208 Late	9N5921-040*
8N9020	0.05	3208 Late	9N5922
4W8091	Standard	3208, 3160	9N5923
8N9065	0.01	3208, 3160	9N5924
8N9064	0.02	3208, 3160	9N5925
4W8091-030	0.03	3208, 3160	9N5925-030*
4W8091-040	0.04	3208, 3160	9N5925-040*
2170390	Standard	3406/B, 3408/B, 3412/B	9Y9497
4W5492-010*	0.01	3406/B, 3408/B, 3412/B	9Y9497-010*
4W5492-020*	0.02	3406/B, 3408/B, 3412/B	9Y9497-020*
4W5698	0.025	3406/B, 3408/B, 3412/B	4W5702
4W5698-030	0.03	3406/B, 3408/B, 3412/B	4W5702
4W5698-040	0.04	3406/B, 3408/B, 3412/B	4W5702
4W5699	0.05	3406/B, 3408/B, 3412/B	4W5703
2170390	Standard	3406C, 3406E	9Y7735
4W5492-010*	0.01	3406C, 3406E	9Y7735-010*
4W5698	0.025	3406C, 3406E	7E0558
4W5698-030	0.03	3406C, 3406E	N/A
4W5698-040	0.04	3406C, 3406E	N/A
4W5699	0.05	3406C, 3406E	7E0559
4W5700	Standard	3408, 3408B, 3412	9Y9497
4W5701	0.01	3408, 3408B, 3412	4W5702
1496031	Standard	3508, 3508B, 3512, 3512B	1077331
1496032	0.025	3508, 3508B, 3512, 3512B	1077332
1496033	0.05	3508, 3508B, 3512, 3512B	1077333
2110587	Standard	C10	2170577



\* Other part no. not included in the list are available. Please contact your sales representative if you have any questions.  
Part Numbers are used for reference purposes only

## CTP Engine Bearings

Part No. Main Bearing	Size (In)	Engine Model	Part No. Con. Rod Bearing
1280400	0.51	C10	1280390
1280401	0.76	C10	1280391
2110588	Standard	C11, C12, C13	1161089
1280382	0.51	C11, C12, C13	1280395
1280383	0.76	C11, C12, C13	1280396
1512939	Standard	C9	2133190/1608194
1N4316	Standard	D353, G353D	1N4336
1N4319	0.025	D353, G353D	1N4337
1N4322	0.05	D353, G353D	1N4338
8N7764	Standard	D379, G379	8N7769
8N7765	0.025	D379, G379	8N7770
8N7766	0.05	D379, G379	8N7771
7W2138	Standard	Tractors 619C	7W2136
8N5346	0.01	Tractors 619C	8N5339
8N5347	0.05	Tractors 619C	8N5338
8N7923	Standard	Tractors D7E	8N7933
8N7923-010	0.01	Tractors D7E	8N7933-010*
8N7923-020	0.02	Tractors D7E	8N7933-020*
8N7923-030	0.03	Tractors D7E	8N7933-030*
8N7923-040	0.04	Tractors D7E	8N7933-040*
8N7924	0.025	Tractors D7E	8N7934
8N7925	0.05	Tractors D7E	8N7935

### \* Special Oversizes in Stock. Please use part number as described (-followed by size)

The sizes shown on this reference chart are given in inches. There is a gradual change in the industry to the use of millimeters instead of inches for size identification marks on engine main and connecting rod bearings. The chart shows a comparison of millimeter to inch dimensions for different sizes of bearings.

Inches	Millimeters
0.005	0.130
0.010	0.250
0.020	0.500
0.025	0.640
0.030	0.750
0.050	1.270

Conversion Factors: To change millimeters to inches, multiply millimeters by .03937.  
To change inches to millimeters, multiply inches by 25.4

\* Other part no. not included in the list are available. Please contact your sales representative if you have any questions.  
Part Numbers are used for reference purposes only