



**PART NO. 4582344**

**MODEL: C4.4**  
**S/N C7N38720**  
**98 BRAKE KW (132 BHP)**  
**AT 2200 RPM**

**ENGINE SPECIFICATIONS**

I-4, 4-Stroke-Cycle Diesel
Bore: 105 mm (4.1 in.)
Stroke: 127 mm (5.0 in.)
Displacement: 4.4 L (269 in <sup>3</sup> )
Aspiration: Turbocharged
Compression Ratio: 16.2:1
Combustion System: Direct Injection
Rotation (from flywheel end): Counterclockwise
<b>Capacity for Liquids</b>
Cooling System (engine only): 7 L (7.4 U.S. qts.)
Lube Oil System (refill) typical: up to 11 L (11.6 U.S. qts.)
Engine Weight, Net Dry (approximate) 360 kg (793.7 lbs.)

# C4.4 INDUSTRIAL DIESEL ENGINE / NEW SURPLUS

The C4.4 Caterpillar® Industrial Diesel Engines represent the pinnacle of reliability, efficiency, and environmental performance. Meticulously field-tested, these engines utilize state-of-the-art common rail fuel systems and advanced control technology to ensure optimal uptime in even the harshest conditions. Renowned for their ability to excel in demanding applications, they consistently outperform expectations. A wide array of equipment depends on the small size yet robust power of the C4.4 engines, including paving compactors, excavators, and backhoe loaders, among others.

QUOTE/ORDER ONLINE:

**[www.costex.com](http://www.costex.com)**

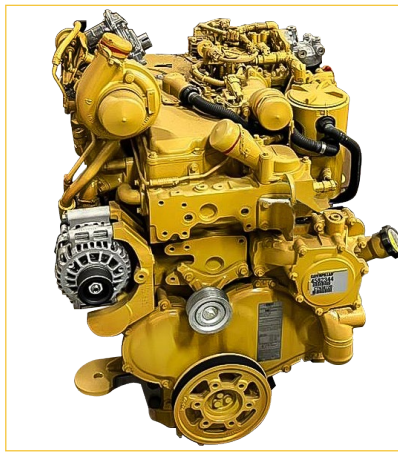
Cat® and Caterpillar® are registered trademarks of Caterpillar, Inc. Komatsu® is a registered trademark of Komatsu Ltd. Komatsu® is the registered trademark of Komatsu Ltd. John Deere® is the registered trademark of John Deere Company. Costex Tractor Parts is not affiliated or associated with Caterpillar Inc., John Deere Ltd. and/or Komatsu Ltd.

F-720-393 REV. A

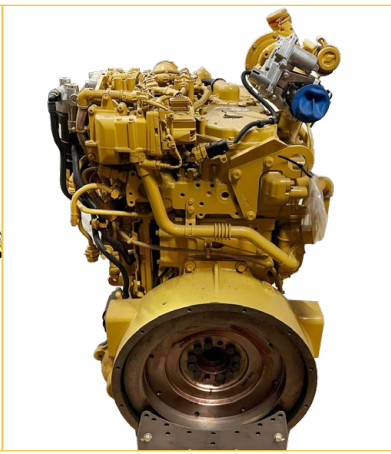
FOLLOW US ON:



NSF-ISR  
Registered to ISO 9001



**FRONT**



**REAR**



**LEFT SIDE**



**RIGHT SIDE**

Equipment	Serial #
CW-34 Paving Compactor Pneumatic CompactorCT3	CT3
CP-74B Paving Compactor Vibratory CompactorL7B	L7B
CS-54B Paving Compactor Vibratory CompactorL4H	L4H
CS-78B Paving Compactor Vibratory CompactorL8C	L8C
316E L Excavator ExcavatorDZW	DZW
318E L Excavator ExcavatorDZF	DZF
CS-66B Paving Compactor Vibratory CompactorCS6	CS6
432F Backhoe Loader Backhoe LoaderPXR	PXR
316E L Excavator ExcavatorWZY	WZY
318E L Excavator ExcavatorWZS	WZS
314E CR Excavator ExcavatorECN	ECN
430F Backhoe Loader Backhoe LoaderRDF	RDF
450F Backhoe Loader Backhoe LoaderHJR	HJR
CP-54B Paving Compactor Vibratory CompactorCPX	CPX
420F Backhoe Loader Backhoe LoaderSKR	SKR
CP-56B Paving Compactor Vibratory CompactorLHC	LHC
312E Excavator ExcavatorGAC	GAC
314E LCR Excavator ExcavatorYCW	YCW
428F Backhoe Loader Backhoe LoaderRAK	RAK
CS-54B Paving Compactor Vibratory CompactorMJ5	MJ5
CS-64B Paving Compactor Vibratory CompactorC64	C64
416F Backhoe Loader Backhoe LoaderKSF	KSF
CB-44B Paving Compactor Vibratory CompactorJXL	JXL
314E LCR Excavator ExcavatorDKD	DKD

Equipment	Serial #
CB10 Paving Compactor CompactorP8P	P8P
CS-56B Paving Compactor Vibratory CompactorL8H	L8H
CS-74B Paving Compactor Vibratory CompactorLCB	LCB
CS-76B Paving Compactor Vibratory CompactorL9H	L9H
434F Backhoe Loader Backhoe LoaderMTR	MTR
312E Excavator ExcavatorPZL	PXZL
312E L Excavator ExcavatorWEY	WEY
316E L Excavator ExcavatorYZZ	YZZ
CB10 Paving Compactor CompactorNPP	NPP
CP-68B Paving Compactor Vibratory CompactorLCF	LCF
430F Backhoe Loader Backhoe LoaderRGS	RGS
444F Backhoe Loader Backhoe LoaderJXR	JXR
CS-68B Paving Compactor Vibratory CompactorMMS	MMS
312E L Excavator ExcavatorMJD	MJD
314E CR Excavator ExcavatorGMD	GMD
314E LCR Excavator ExcavatorZJT	ZJT
420F Backhoe Loader Backhoe LoaderJWJ	JWJ
CW-34 Paving Compactor Pneumatic CompactorTLJ	TLJ
CB-54B Paving Compactor Vibratory CompactorLXD	LXD
D3K2 LGP Track-Type Tractor Track-Type TractorKLL	KLL
D5K2 LGP Track-Type Tractor Track-Type TractorKYY	KYY
CB-54B Paving Compactor Vibratory CompactorRJN	RJN
CB-44B Paving Compactor Vibratory CompactorNSL	NSL
D4K2 LGP Track-Type Tractor Track-Type TractorKRR	KRR
D4K2 XL Track-Type Tractor Track-Type TractorKMM	KMM

QUOTE/ORDER ONLINE:

**www.costex.com**

Cat® and Caterpillar® are registered trademarks of Caterpillar, Inc. Komatsu® is a registered trademark of Komatsu Ltd. Komatsu® is the registered trademark of Komatsu Ltd. John Deere® is the registered trademark of John Deere Company. Costex Tractor Parts is not affiliated or associated with Caterpillar Inc., John Deere Ltd. and/or Komatsu Ltd.

F-720-393 REV. A

FOLLOW US ON:



NSF-ISR

Registered to ISO 9001